

# Double Diamond Ranch

## 13th Annual Angus & Red Angus Production Sale

### **SALE HOSTS:**

Double Diamond Ranch  
23300 114th St SW, Douglas, ND 58735  
John & Brenda Novodvorsky 701-722-3942  
Shane & Jami Novodvorsky 701-722-3534  
Shane cell 701-721-3943  
Sale day phone 701-722-3942 (barn)  
701-720-3942 & 701-721-3942 (cell)

### **SALE DATE:**

Saturday, March 26, 2011 1:00 p.m. CST  
In case of severe storm sale day, call 722-3942.

### **SALE LOCATION:**

At the Ranch - Douglas, ND  
Directions to Sale: From Minot, ND - 16 miles south  
on US Highway 83 to ND Highway 23. 8 miles west on  
ND 23 to ranch sign then 1 mile north.

### **AUCTIONEER:**

Ross Glass, 701-878-4001

### **INSPECTION OF CATTLE:**

Bulls and heifers will be available for inspection at  
the ranch any time.

### **LUNCH:**

Complimentary lunch served before the sale.

### **ORDER BUYING:**

Buyers unable to attend sale may leave their bid to  
be represented by the auctioneer or Double Diamond  
Ranch.

### **DELIVERY:**

Free BULL delivery within ND on any bull purchase  
\$2500 and over. We will start delivering bulls as soon as  
time and weather permit.

### **INSURANCE:**

Livestock insurance will be available Sale Day.

### **FEEDING:**

We will keep your bulls for 2 weeks at no charge BUT  
WILL NOT BE RESPONSIBLE FOR SICKNESS  
OR INJURY. Feed arrangements available - bulls left  
to pick up later will be charged \$2.00 per day after 2  
weeks for feeding. Bulls are the property of the buyer  
immediately after the sale. New owners are strongly  
encouraged to insure your bulls against any loss.

### **HERD HEALTH:**

All bulls will be accompanied by proper health  
certificate for immediate interstate shipment. Bulls  
and heifers have been vaccinated with 7 Way, Cattle  
Master 4, One Shot and poured with Dectomax. Heif-  
ers have been Bangs vaccinated and preg checked open.  
Excellent herd health.

### **LIABILITY:**

All persons who attend this sale do so at their own risk,  
Double Diamond Ranch assumes no liability, legal or  
otherwise, for any accidents which may occur.

### **TERMS AND CONDITIONS:**

Cattle sell under the standard terms and conditions  
adopted by AAA and RAA.

**DDR UPWARD 0505**  
 Reg. No. 16868597 Tattoo: 0505 DOB: 03/13/10

**1** Connealy Lead On  
 Connealy Onward  
 Altune of Conanga 6104

SITZ UPWARD 307R  
 Sitz Value 7097  
 Sitz Henrietta Pride 81M  
 Sitz Henrietta Pride 1370

S A F NEUTRON  
 S A NEUTRON 377  
 S A QUEEN SUSAN 102

DDR HOLLY 4015  
 ANKONIAN ELIXIR 100  
 DDR HOLLY 2015  
 DDR HOLLY 9015

SIRE		
EPD	ACC	
Birth +2.40	0.97	
Wean +70	0.95	
Milk +42	0.67	
Year +138	0.92	
DAM		
EPD	ACC	
Birth +4.70	0.41	
Wean +56	0.30	
Milk +19	0.30	
Year +108	0.20	

**DDR UPWARD 0529**  
 Reg. No. 16868590 Tattoo: 0529 DOB: 03/18/10

**3** Connealy Lead On  
 Connealy Onward  
 Altune of Conanga 6104

SITZ UPWARD 307R  
 Sitz Value 7097  
 Sitz Henrietta Pride 81M  
 Sitz Henrietta Pride 1370

TC FREEDOM 104  
 SIK TRADEMARK 7970  
 SIKS TRAVELER 7970

DDR LADY KOLE 6152  
 DDR KOLE TRAIN  
 DDR LADY KOLE 2127  
 DDR LADY WESTERN 8170

SIRE		
EPD	ACC	
Birth +2.40	0.97	
Wean +70	0.95	
Milk +42	0.67	
Year +138	0.92	
DAM		
EPD	ACC	
Birth +2.80	0.37	
Wean +53	0.25	
Milk +16	0.21	
Year +91	0.12	

**DDR UPWARD 0596**  
 Reg. No. 16868593 Tattoo: 0596 DOB: 03/28/10

**6** Connealy Lead On  
 Connealy Onward  
 Altune of Conanga 6104

SITZ UPWARD 307R  
 Sitz Value 7097  
 Sitz Henrietta Pride 81M  
 Sitz Henrietta Pride 1370

BALDRIDGE NEBRASKA 901  
 VERMILION NEBRASKA M404  
 VERMILION K PRIDE 0072

DDR TRAVELIN BONNIE 5078  
 DDR KOLE BLACK 1129  
 DDR TRAVELIN BONNIE 3220  
 DDR TRAVELIN BONNIE 0013

SIRE		
EPD	ACC	
Birth +2.4	0.97	
Wean +70	0.95	
Milk +42	0.67	
Year +138	0.92	
DAM		
EPD	ACC	
Birth +0.9	0.40	
Wean +48	0.29	
Milk +25	0.26	
Year +83	0.19	

**DDR IN FOCUS 0551**  
 Reg. No. 16869437 Tattoo: 0551 DOB: 03/22/10

**9** S A F Fame  
 S A F FOCUS of E R  
 G D A R Forever Lady 246

MYTTY IN FOCUS  
 Sitz Alliance 6595  
 Mytty Countess 906  
 Baldrige Countess 357

Boyd New Day 8005  
 PRAIRIE PRIDE PARTNER  
 21AR Queen View A870

DDR KARAMA 8220  
 F A R STOCKMAN 247K  
 DDR KARAMA 2114  
 DDR KARAMA 8125

SIRE		
EPD	ACC	
Birth -1.3	0.99	
Wean +54	0.98	
Milk +26	0.94	
Year +100	0.97	
DAM		
EPD	ACC	
Birth +5.5	0.34	
Wean +57	0.23	
Milk +22	0.12	
Year +92	0.11	

BW EPD	WW EPD	MILK EPD	YW EPD	Actual BW	205 Day Weight	205 Day Ratio	365 Day Weight	365 Day Ratio	Actual Scrotal
I+4.1	I+61	I+31	I+123	88	684	99	0	0	0.00

Carcass EPD's: CW , MB , REA , Fat , %RP  
 Dam Production: BR 4 99; WR 4 106; YR 0 0

BW EPD	WW EPD	MILK EPD	YW EPD	Actual BW	205 Day Weight	205 Day Ratio	365 Day Weight	365 Day Ratio	Actual Scrotal
I+3.5	I+62	I+29	I+115	90	706	102	0	0	0.00

Carcass EPD's: CW , MB , REA , Fat , %RP  
 Dam Production: BR 3 105; WR 3 105; YR 0 0

BW EPD	WW EPD	MILK EPD	YW EPD	Actual BW	205 Day Weight	205 Day Ratio	365 Day Weight	365 Day Ratio	Actual Scrotal
I+1.7	I+56	I+34	I+111	84	674	98	0	0	0.00

Carcass EPD's: CW I + 35, MB I + 0.20, REA I + 0.28, Fat I + 0.13  
 Dam Production: BR 4 100; WR 4 104; YR 1 111

BW EPD	WW EPD	MILK EPD	YW EPD	Actual BW	205 Day Weight	205 Day Ratio	365 Day Weight	365 Day Ratio	Actual Scrotal
I+2.4	I+57	I+24	I+96	78	705	102	0	0	0.00

Carcass EPD's: CW + 0, MB + 0.00, REA + 0.00, Fat + 0.000  
 Dam Production: BR 1 101; WR 1 102; YR 0 0



Sitz Upward 307R

**DDR UPWARD 0564**  
 Reg. No. 16868595 Tattoo: 0564 DOB: 03/24/10

**4** Connealy Lead On  
 Connealy Onward  
 Altune of Conanga 6104

SITZ UPWARD 307R  
 Sitz Value 7097  
 Sitz Henrietta Pride 81M  
 Sitz Henrietta Pride 1370

ANKONIAN ELIXIR DB  
 ANKONIAN ELIXIR 100  
 ANKONY LASS 206T

DDR BLACKCAP 4031  
 O G L BATTLE CRY 427 128  
 DDR BATTLECRY BLACKCAP 0011  
 LAKE VIEW BLACKCAP 402

SIRE		
EPD	ACC	
Birth +2.40	0.97	
Wean +70	0.95	
Milk +42	0.67	
Year +138	0.92	
DAM		
EPD	ACC	
Birth +4.70	0.40	
Wean +39	0.30	
Milk +21	0.30	
Year +86	0.20	

BW EPD	WW EPD	MILK EPD	YW EPD	Actual BW	205 Day Weight	205 Day Ratio	365 Day Weight	365 Day Ratio	Actual Scrotal
I+3.0	I+55	I+32	I+112	83	683	99	0	0	0.00

Carcass EPD's: CW , MB , REA , Fat , %RP  
 Dam Production: BR 3 102; WR 3 97; YR 0 0

**DDR Upward 0620**  
 Reg. No. 16870419 Tattoo: 0620 DOB: 03/21/10

**7** Connealy Lead On  
 Connealy Onward  
 Altune of Conanga 6104

SITZ UPWARD 307R  
 Sitz Value 7097  
 Sitz Henrietta Pride 81M  
 Sitz Henrietta Pride 1370

TWIN VALLEY PRECISION E161  
 HOFF PRECISION 7143 374  
 HOFF MARRIOTT S C 455

DDR LADY KAYLA 7300  
 KRUGERRAND OF DONAMERE 490  
 DDR LADY KRUGERRAND 8030  
 HOFF LADY CHALLENGER S C 917

SIRE		
EPD	ACC	
Birth +2.4	0.97	
Wean +70	0.95	
Milk +42	0.67	
Year +138	0.92	
DAM		
EPD	ACC	
Birth +1	2.8	0.05
Wean +1	36	0.05
Milk +1	18	0.05
Year +1	72	0.05

BW EPD	WW EPD	MILK EPD	YW EPD	Actual BW	205 Day Weight	205 Day Ratio	365 Day Weight	365 Day Ratio	Actual Scrotal
+2.6	I+56	I+30	+105	0	720	104	0	0	0.00

Carcass EPD's: CW + 0, MB + 0.00, REA + 0.00, Fat + 0.000  
 Dam Production: BR 0 0; WR 1 104; YR 0 0



Mytty In Focus

**DDR UPWARD 0521**  
 Reg. No. 16868592 Tattoo: 0521 DOB: 03/17/10

**2** Connealy Lead On  
 Connealy Onward  
 Altune of Conanga 6104

SITZ UPWARD 307R  
 Sitz Value 7097  
 Sitz Henrietta Pride 81M  
 Sitz Henrietta Pride 1370

HOFF HEAD OF THE CLASS SC534  
 HOFF FIRST EDITION 058 242  
 HOFF WITCH of S C 7131 058

DDR BLACKCAP EDITION 6055  
 B T ULTRAVOX 297E  
 DDR ULTRA BLACKCAP 2022  
 DDR BATTLECRY BLACKCAP 0011

SIRE		
EPD	ACC	
Birth +2.40	0.97	
Wean +70	0.95	
Milk +42	0.67	
Year +138	0.92	
DAM		
EPD	ACC	
Birth +3.90	0.39	
Wean +57	0.29	
Milk +18	0.27	
Year +101	0.20	

BW EPD	WW EPD	MILK EPD	YW EPD	Actual BW	205 Day Weight	205 Day Ratio	365 Day Weight	365 Day Ratio	Actual Scrotal
I+2.3	I+63	I+30	I+120	79	694	101	0	0	0.00

Carcass EPD's: CW , MB , REA , Fat , %RP  
 Dam Production: BR 3 97; WR 3 102; YR 0 0

**DDR UPWARD 0573**  
 Reg. No. 16868591 Tattoo: 0573 DOB: 03/25/10

**5** Connealy Lead On  
 Connealy Onward  
 Altune of Conanga 6104

SITZ UPWARD 307R  
 Sitz Value 7097  
 Sitz Henrietta Pride 81M  
 Sitz Henrietta Pride 1370

TWIN VALLEY PRECISION E161  
 HOFF PRECISION 7143 374  
 HOFF MARRIOTT S C 455

DDR BLACKCAP 6084  
 ANKONIAN ELIXIR 100  
 DDR BLACKCAP 4031  
 DDR BATTLECRY BLACKCAP 0011

SIRE		
EPD	ACC	
Birth +2.40	0.97	
Wean +70	0.95	
Milk +42	0.67	
Year +138	0.92	
DAM		
EPD	ACC	
Birth +4.00	0.27	
Wean +39	0.20	
Milk +21	0.22	
Year +84	0.14	

BW EPD	WW EPD	MILK EPD	YW EPD	Actual BW	205 Day Weight	205 Day Ratio	365 Day Weight	365 Day Ratio	Actual Scrotal
I+1.6	I+55	I+32	I+111	73	692	100	0	0	0.00

Carcass EPD's: CW , MB , REA , Fat , %RP  
 Dam Production: BR 3 89; WR 3 99; YR 1 113

**DDR IN FOCUS 0510**  
 Reg. No. 16869438 Tattoo: 0510 DOB: 03/15/10

**8** S A F Fame  
 S A F FOCUS of E R  
 G D A R Forever Lady 246

MYTTY IN FOCUS  
 Sitz Alliance 6595  
 Mytty Countess 906  
 Baldrige Countess 357

HOFF HEAD OF THE CLASS SC534  
 HOFF FIRST EDITION 058 242  
 HOFF WITCH of S C 7131 058

DDR PRIDE 8070  
 GREENS WESTERN IMPROVEMENT  
 DDR PRIDE 5119  
 SSAF 212 PRIDE 713

SIRE		
EPD	ACC	
Birth -1.3	0.99	
Wean +54	0.98	
Milk +26	0.94	
Year +100	0.97	
DAM		
EPD	ACC	
Birth +3.0	0.36	
Wean +52	0.26	
Milk +16	0.19	
Year +97	0.18	

BW EPD	WW EPD	MILK EPD	YW EPD	Actual BW	205 Day Weight	205 Day Ratio	365 Day Weight	365 Day Ratio	Actual Scrotal
I+0.4	I+57	I+21	I+99	70	730	106	0	0	0.00

Carcass EPD's: CW + 0, MB + 0.00, REA + 0.00, Fat + 0.000  
 Dam Production: BR 1 91; WR 1 106; YR 0 0

**DDR IN FOCUS 0582**  
 Reg. No. 16869439 Tattoo: 0582 DOB: 03/26/10

**10** S A F Fame  
 S A F FOCUS of E R  
 G D A R Forever Lady 246

MYTTY IN FOCUS  
 Sitz Alliance 6595  
 Mytty Countess 906  
 Baldrige Countess 357

HOFF HEAD OF THE CLASS SC534  
 HOFF FIRST EDITION 058 242  
 HOFF WITCH of S C 7131 058

DDR LADY 8012  
 KRUGERRAND OF DONAMERE 490  
 DDR MILLENIUM LADY 0051  
 HOFF LADY CHALLENGER S C 917

SIRE		
EPD	ACC	
Birth -1.3	0.99	
Wean +54	0.98	
Milk +26	0.94	
Year +100	0.97	
DAM		
EPD	ACC	
Birth +1	3.6	0.05
Wean +1	46	0.05
Milk +1	14	0.05
Year +1	87	0.05

BW EPD	WW EPD	MILK EPD	YW EPD	Actual BW	205 Day Weight	205 Day Ratio	365 Day Weight	365 Day Ratio	Actual Scrotal
I+2.2	I+52	I+20	I+94	82	692	100	0	0	0.00

Carcass EPD's: CW + 0, MB + 0.00, REA + 0.00, Fat + 0.000  
 Dam Production: BR 1 104; WR 1 100; YR 0 0

**DDR PRAIRIE 0599**

Reg. No. 16869047 Tattoo: 0599 DOB: 03/28/10

A A R New Trend  
Boyd New Day 8005  
S V F Forever Lady 57D**PRAIRIE PRIDE PARTNER**  
Summitcrest Hi Flyer 3B18  
21AR Queen View A870  
21 A R Queen View 870AHOFF HI SPADE S C 491  
G M A R HI SPADE 039  
PARTISOVER BURGESS 527**DDR BLACKCAP 2037**  
TC INFLUENCE  
LAKE VIEW BLACKCAP 402  
LAKE VIEW BLACKCAP 052

SIRE		
EPD	ACC	
Birth	+0.80	0.62
Wean	+65	0.49
Milk	+25	0.24
Year	+109	0.34
DAM		
EPD	ACC	
Birth	+4.50	0.37
Wean	+54	0.30
Milk	+16	0.34
Year	+87	0.22

BW	WW	MILK	YW	Actual	205 Day	205 Day	365 Day	365 Day	Actual
EPD	EPD	EPD	EPD	BW	Weight	Ratio	Weight	Ratio	Scrotal
I+2.3	I+59	I+21	I+98	82	678	98	0	0	0.00

Carcass EPD's: CW I+30, MB I+0, REA I+0, Fat I+0, %RP  
Dam Production: BR 6 105; WR 6 100; YR 1 81**DDR PRAIRIE 0630**

eg. No. 16868433 Tattoo: 0630 DOB: 04/03/10

A A R New Trend  
Boyd New Day 8005  
S V F Forever Lady 57D**PRAIRIE PRIDE PARTNER**  
Summitcrest Hi Flyer 3B18  
21AR Queen View A870  
21 A R Queen View 870ATWIN VALLEY PRECISION E161  
HOFF PRECISION 7143 374  
HOFF MARRIOTT S C 455**DDR PRECISE POWER 6175**  
ANKONIAN ELIXIR 100  
DDR ELIXIR POWER 2056  
DDR WESTERN POWER 9025

SIRE		
EPD	ACC	
Birth	+0.80	0.62
Wean	+65	0.49
Milk	+25	0.24
Year	+109	0.34
DAM		
EPD	ACC	
Birth	+2.90	0.38
Wean	+40	0.26
Milk	+20	0.22
Year	+83	0.12

BW	WW	MILK	YW	Actual	205 Day	205 Day	365 Day	365 Day	Actual
EPD	EPD	EPD	EPD	BW	Weight	Ratio	Weight	Ratio	Scrotal
I+2.1	I+54	I+23	I+96	83	706	102	0	0	0.00

Carcass EPD's: CW , MB , REA , Fat , %RP  
Dam Production: BR 3 94; WR 3 101; YR 0 0**DDR PRAIRIE 0828**

eg. No. 621248433 Tattoo: 0828 DOB: 05/03/10

A A R New Trend  
1 New Day 8005  
S V F Forever Lady 57D**PRAIRIE PRIDE PARTNER**  
Summitcrest Hi Flyer 3B18  
21AR Queen View A870  
21 A R Queen View 870A**PUREBRED ANGUS COW 2180**

SIRE		
EPD	ACC	
Birth	+0.80	0.62
Wean	+65	0.49
Milk	+25	0.24
Year	+109	0.34
DAM		
EPD	ACC	
Birth	0.00	0.00
Wean	0	0.00
Milk	0	0.00
Year	0	0.00

BW	WW	MILK	YW	Actual	205 Day	205 Day	365 Day	365 Day	Actual
EPD	EPD	EPD	EPD	BW	Weight	Ratio	Weight	Ratio	Scrotal
0.0	0	0	0	90	638	100	0	0	0.00

Carcass EPD's: CW , MB , REA , Fat , %RP  
Dam Production: BR 5 98; WR 5 100; YR 0 0**DDR TOTAL 0783**

Reg. No. 16868465 Tattoo: 0783 DOB: 04/17/10

Bon View New Design 208  
TC TOTAL 410  
TC Erica Eileen 2047**RBM TOTAL 767**  
War Hall of Fame 8023  
H Fame R B M 383  
Miss 9440 of R B M 451NORTHERN IMPROVEMENT 4480 GF  
GREENS WESTERN IMPROVEMENT  
GREENS NIKKI 3929**DDR BONNIE 4213**  
G D A R TRAVELER 71  
DDR TRAVELIN BONNIE 0013  
DDR BONNIE BRAE 8085

SIRE		
EPD	ACC	
Birth	+3.20	0.49
Wean	+67	0.37
Milk	+19	0.21
Year	+117	0.28
DAM		
EPD	ACC	
Birth	+2.40	0.42
Wean	+42	0.30
Milk	+17	0.28
Year	+78	0.19

BW	WW	MILK	YW	Actual	205 Day	205 Day	365 Day	365 Day	Actual
EPD	EPD	EPD	EPD	BW	Weight	Ratio	Weight	Ratio	Scrotal
I+3.4	I+51	I+18	I+98	88	634	92	0	0	0.00

Carcass EPD's: CW I+26, MB I+0, REA I+0, Fat I0, %RP  
Dam Production: BR 5 98; WR 5 98; YR 2 107**DDR TOTAL 0788**

Reg. No. 16869049 Tattoo: 0788 DOB: 04/19/10

Bon View New Design 208  
TC TOTAL 410  
TC Erica Eileen 2047**RBM TOTAL 767**  
War Hall of Fame 8023  
H Fame R B M 383  
Miss 9440 of R B M 451TWIN VALLEY PRECISION E161  
HOFF PRECISION 7143 374  
HOFF MARRIOTT S C 455**DDR HOLLY 6105**  
ANKONIAN ELIXIR 100  
DDR HOLLY 3015  
DDR HOLLY 9015

SIRE		
EPD	ACC	
Birth	+3.20	0.49
Wean	+67	0.37
Milk	+19	0.21
Year	+117	0.28
DAM		
EPD	ACC	
Birth	+4.10	0.37
Wean	+42	0.26
Milk	+27	0.22
Year	+86	0.14

BW	WW	MILK	YW	Actual	205 Day	205 Day	365 Day	365 Day	Actual
EPD	EPD	EPD	EPD	BW	Weight	Ratio	Weight	Ratio	Scrotal
I+3.9	I+50	I+23	I+102	87	651	94	0	0	0.00

Carcass EPD's: CW , MB , REA , Fat , %RP  
Dam Production: BR 3 101; WR 3 105; YR 1 111

# Look for the Diamonds . . .

Dear Friends and Cattlemen,

Welcome to our 13th annual production sale! As we write this we are recovering from a massive spring snow storm that has added yet another 3 inches of snow to our already over burdened supply of the white stuff. Last winter was much the same, too much snow and cold temps, but when spring did come it brought us an abundance of grass and good crops so we look forward to spring. This year cattle prices have already given ranchers quite a lot to be happy about.

Considering the cold weather, the bulls have gained well and look good. As we have in previous years, we will be offering a private treaty pen of open commercial angus heifers from the Howard Ranch. We are going to mix things up a bit this year with the bull sale by holding the sale in the pens where you can sort through the bulls and get a good look at them.

After such a long cold winter we invite you to join us for our annual production sale on March 26 at 1:00 p.m. Come shake the snow off your boots, enjoy Brenda's cooking and spend the afternoon looking at cattle.

Its been a good run...

Sincerely,

"The Double Diamond Ranch Crew"

John & Brenda  
Shane, Jami, Tate & Miranda  
Sheri, Justin, Cheyenne & Tucker





WR MR Red Dawg 5335

**4DDR RED DAWG 0602**  
03/29/2010 1A — 100.0% # 1406737

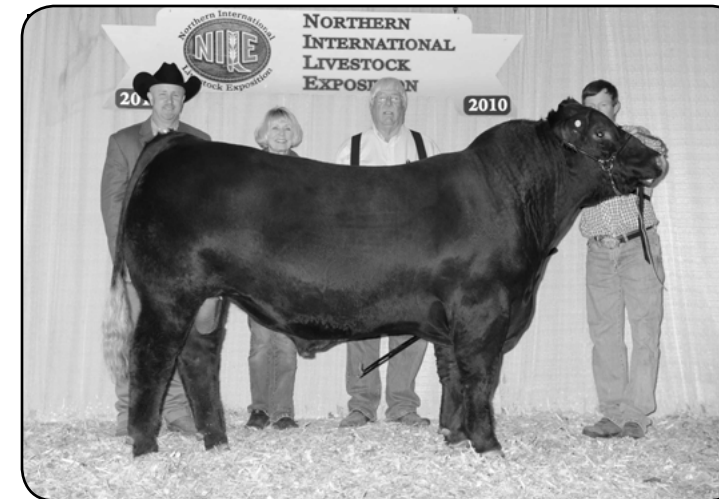
Ratio	Data
Act. BW	94 84
Adj. WW	683 102
Adj. YW	
ADG	
SC	
Frame	

BECKTON JULIAN GG B571 [OSF]  
BUF CRK VALENTINO N031 [OSC,MAF]  
BUF CRK PRIMROSE 5679 [OSC]  
WR MR. RED DAWG 5335 (#1046249) [OSF]  
LMAN KING ROB 8621 [MAF,OSF]  
TMAS MS FORTUNE 114  
STRAKA MS FORTUNE 4109

BJR HIGH CAPACITY 008 [MAF,OSF]  
UBAR SEQUOIA 202  
FORSTER COPPRQUEEN 7168 [OSF]  
4DDR SEQUOIA 5021 (#1065018)  
GMRA PHOENIX 3X 588  
RCRA MS ERICA  
DEKAP TANTILIZING ERICA 30K7  
MPPA: 97.1

EPD	Top%	Data
MARB	-0.16	95%
YG	-0.05	99%
CW	46	98%
REA	0.33	8%
FAT	0.01	65%

EPD	CED	BW	WW	YW	MILK	TM	ME	HPG	CEM	STAY
EPD	0.1	40	73	13	32					8
Top%	50%	26%	21%	85%	57%					64%



**4DDR YUKON 0777**  
04/15/2010 1A — 100.0% # 1409592

Ratio	Data
Act. BW	99 80
Adj. WW	101 658
Adj. YW	
ADG	
SC	
Frame	

4WLC FOX 572  
4DDR DIAMOND YUKON 500  
HC LADY ELINE 208  
4DDR YUKON 8221 (#1280086)  
LMG GILLS POWER SURGE 4567  
4DDR SURGE SUE 6061  
4DDR MATRIX BO 2171

DKK POWER SURGE 708  
LMG GILLS POWER SURGE 4567  
LMG ROXIE 344  
4DDR ANNIE OAKLEY 6155 (#1132346)  
BADLANDS KING 211  
RCRA ANNIE OAKLEY  
RCRA MS VALENTINE

MPPA:

EPD	Top%	Data
MARB	-0.13	93%
YG	-0.07	95%
CW	19	98%
REA	-0.22	97%
FAT	-0.03	3%

EPD	CED	BW	WW	YW	MILK	TM	ME	HPG	CEM	STAY
EPD	-0.6	18	38	22	30					7
Top%	32%	96%	95%	15%	77%					96%

**4DDR RED DAWG 0516**  
03/17/2010 1A — 100.0% # 1406723

Ratio	Data
Act. BW	95 85
Adj. WW	671 100
Adj. YW	
ADG	
SC	
Frame	

BECKTON JULIAN GG B571 [OSF]  
BUF CRK VALENTINO N031 [OSC,MAF]  
BUF CRK PRIMROSE 5679 [OSC]  
WR MR. RED DAWG 5335 (#1046249) [OSF]  
LMAN KING ROB 8621 [MAF,OSF]  
TMAS MS FORTUNE 114  
STRAKA MS FORTUNE 4109

RED ROYAL CANOOK 123D  
TPIE LAKOTA 9166  
BJR LAKOTA 388-819  
4DDR ANNIE O 2174 (#871509)  
BADLANDS BONUS 702  
RRCRA ANNIE 0004  
RCRA ANNIE OAKLEY  
MPPA: 94.7

EPD	Top%	Data
MARB	-0.29	99%
YG	-0.10	99%
CW	49	98%
REA	0.40	5%
FAT	-0.01	23%

EPD	CED	BW	WW	YW	MILK	TM	ME	HPG	CEM	STAY
EPD	0.6	38	77	13	32					9
Top%	61%	31%	16%	85%	62%					47%



BJR Monu 4X 303

**4DDR ADVANTAGE 0638**  
04/05/2010 1A — 100.0% # 1409593

Ratio	Data
Act. BW	107 88
Adj. WW	99 644
Adj. YW	
ADG	
SC	
Frame	

PERKS ADVANCE 121R [OSF]  
PIE ADVANTAGE 4139 [OSF]  
PIE LO PLAYMATE 883  
TPIE MAJOR ADVANTAGE 23T (#1174277) [OSF]  
LCC MAJOR LEAGUE A502M [MAF,OSF]  
RCRA MAJOR EMERALD 12P  
RED MAC MISS EMERALD 7E

BADLANDS BONUS 702  
LDCC FARGO 111 [OSF]  
RED MEM DAISY 4J  
4DDR PHOENIX 5155 (#1065000)  
RCRA GLADIATOR 1K  
4DDR MS PHOENIX 2135  
RCRA MS MORNING PHOENIX

MPPA: 100.9

EPD	Top%	Data
MARB	0.12	36%
YG	-0.08	98%
CW	37	98%
REA	0.19	23%
FAT	-0.01	23%

EPD	CED	BW	WW	YW	MILK	TM	ME	HPG	CEM	STAY
EPD	1.8	34	60	14	31					7
Top%	86%	45%	54%	77%	65%					72%



Majestic Lightning 717 SGMR

**4DDR RED DAWG 0541**  
03/21/2010 1A — 100.0% # 1406726

Ratio	Data
Act. BW	89 80
Adj. WW	673 101
Adj. YW	
ADG	
SC	
Frame	

BECKTON JULIAN GG B571 [OSF]  
BUF CRK VALENTINO N031 [OSC,MAF]  
BUF CRK PRIMROSE 5679 [OSC]  
WR MR. RED DAWG 5335 (#1046249) [OSF]  
LMAN KING ROB 8621 [MAF,OSF]  
TMAS MS FORTUNE 114  
STRAKA MS FORTUNE 4109

GLACIER MARIAS 548 [MAF,OSF]  
GLACIER TAMARACK 722  
GLACIER FAYET 155  
4DDR SUN QUARTZ 3023 (#932957)  
QV ROBIN HOOD 917 G33  
RCRA ROSE QUARTZ  
PIE DRIVE 155  
MPPA: 98.5

EPD	Top%	Data
MARB	-0.15	94%
YG	-0.06	99%
CW	58	98%
REA	0.28	12%
FAT	-0.02	9%

EPD	CED	BW	WW	YW	MILK	TM	ME	HPG	CEM	STAY
EPD	0.2	44	86	11	33					8
Top%	52%	13%	4%	93%	56%					57%

**4DDR MONU 0631**  
04/03/2010 1A — 100.0% # 1409594

Ratio	Data
Act. BW	94 77
Adj. WW	100 651
Adj. YW	
ADG	
SC	
Frame	

LMAN MONU 4X  
RED SSS MONU4X 237C [OSF]  
SSS BLOCKANNA 721A  
BJR MONU 4X-303 (#491246) [MAF,OSF]  
SAMS PROSPECTOR 133Z [MAF]  
RCRA SAMANTHA  
RCRA MS CARROUSEL

GLACIER MARIAS 548 [MAF,OSF]  
GLACIER TAMARACK 722  
GLACIER FAYET 155  
4DDR MS ERICA 4029 (#998347)  
GMRA PHOENIX 3X 588  
RCRA MS ERICA  
DEKAP TANTILIZING ERICA 30K7  
MPPA: 106.2

EPD	Top%	Data
MARB	-0.14	93%
YG	0.02	99%
CW	40	95%
REA	-0.18	95%
FAT	-0.02	9%

EPD	CED	BW	WW	YW	MILK	TM	ME	HPG	CEM	STAY
EPD	-1.9	34	61	16	33	8	10			11
Top%	22%	28%	31%	64%	41%	87%	47%			29%

**4DDR ADVANTAGE 0645**  
04/07/2010 1A — 100.0% # 1406732

Ratio	Data
Act. BW	98 88
Adj. WW	97 649
Adj. YW	
ADG	
SC	
Frame	

PERKS ADVANCE 121R [OSF]  
PIE ADVANTAGE 4139 [OSF]  
PIE LO PLAYMATE 883  
TPIE MAJOR ADVANTAGE 23T (#1174277) [OSF]  
LCC MAJOR LEAGUE A502M [MAF,OSF]  
RCRA MAJOR EMERALD 12P  
RED MAC MISS EMERALD 7E

RED MMD MATRIX SON 30G  
RCRA GLADIATOR 1K  
DEKAP TANTILIZING ERICA 30K7  
4DDR FIREFLY 4161 (#998343)  
LMG GILL HORIZON 5379  
RCRA FIREFLY 1090  
RCRA FIREFLY 38G  
MPPA: 98.9

EPD	Top%	Data
MARB	0.03	61%
YG	-0.10	96%
CW	29	98%
REA	0.25	15%
FAT	0.01	65%

EPD	CED	BW	WW	YW	MILK	TM	ME	HPG	CEM	STAY
EPD	-0.2	29	50	15	29					8
Top%	48%	64%	73%	72%	75%					70%

**4DDR LIGHTNING 0553**  
03/22/2010 1A — 100.0% # 1406763

Ratio	Data
Act. BW	100 78
Adj. WW	100 724
Adj. YW	
ADG	
SC	
Frame	

LCHMN GRANDCANYON 1244G [OSC,MAF]  
WHITESTONE CAYENNE 423R [OSC,MAF]  
FEDDES BLOCKANNA 807 [MAF,OSF]  
MAJESTIC LIGHTNING 717 SGMR (#1155775) [MAF,OSF]  
WHITESTONE SIZABULL M131  
WHITESTONE BLOCKANNA R227 [OSF]  
BLOCKANA 0143 OF WSRA

BUF CRK VALENTINO N031 [OSC,MAF]  
WR MR. RED DAWG 5335 [OSF]  
TMAS MS FORTUNE 114  
4DDR REBA 8101 (#1280062)  
BADLANDS BONUS 702  
SJCC REBA 3147  
BADLANDS REBA 403  
MPPA:

EPD	Top%	Data
MARB	-0.07	84%
YG	0.08	99%
CW	66	94%
REA	0.03	58%
FAT	-0.02	9%

EPD	CED	BW	WW	YW	MILK	TM	ME	HPG	CEM	STAY
EPD	3.1	53	100	15	42					6
Top%	96%	2%	1%	69%	8%					90%

# *Replacement Heifers*

It has become a tradition for us to offer a selection of commercial Angus and Red Angus open heifers at our production sale and this year is no exception but it is a little different scenario. The heifers this year are top quality replacements from the Ralph Howard herd. All heifers are open commercial heifers that have been preg checked, bangs vaccinated and are current on their calthood vaccinations.

The Howard Ranch heifers represent the top of their heifer pen, heifers not meeting replacement standards have been sorted off and sold. The Howards have selected a small group of heifers for their own use and are offering the rest to you.

We are featuring these heifers as we have before, on a private treaty basis. This will allow you to view them as a group and get a better look at them than the sales ring allows. If you are interested in the heifers and have questions please feel free to call and talk to John about them.

If you are in need of replacement heifers you should definitely take a look at these. They have been raised right and are ready to go to work for you.

